



LATITUDO 40[®]

EARTH ANALYTICS FOR COGNITIVE PLACES



**IN AN INCREASINGLY COMPLEX AND
VOLATILE WORLD, BEING PREPARED
FOR TOMORROW'S URBAN
SUSTAINABILITY CHALLENGES
REQUIRES A NEW WAY TO LOOK**

WHY IS IT SO IMPORTANT TO TALK ABOUT THE RISKS IN URBAN AREAS?

**OUR CITIES ARE ON THE FRONTLINE
OF CLIMATE CHANGE.
HOW CAN WE DESIGN THEM TO BE
MORE RESILIENT AND
SUSTAINABLE?**

INSURANCE COMPANIES NEED DATA



ENHANCING RISK
ASSESSMENT



STREAMLINING CLAIMS
PROCESSING



DETECTING FRAUD WITH
PRECISION



ENVIRONMENTAL
INSIGHTS

× To overcome these challenges, data must be **global**, **detailed**, **up-to-date**, **accessible**, and **reliable**.
Only in this case can they provide a real contribution to an ambitious vision oriented towards sustainability.

OUR VISION

The first fully automated **Environmental Operative System** to design cognitive cities/places of the future



DATA FROM SPACE
X (REMOTE SENSING)



LATITUDO 40 ARTIFICIAL
INTELLIGENCE



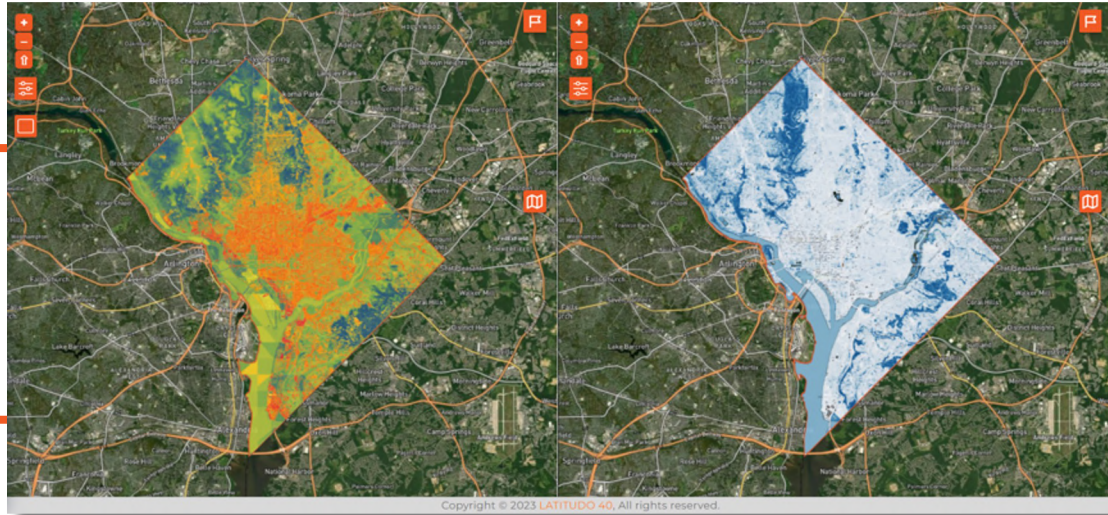
EARTH ACTIONABLE
INSIGHTS & SIMULATIONS

Designed to **ensure** that decision-makers can **grasp**
and **act** quickly on our insights. ...



LATITUDO 4.0[®]

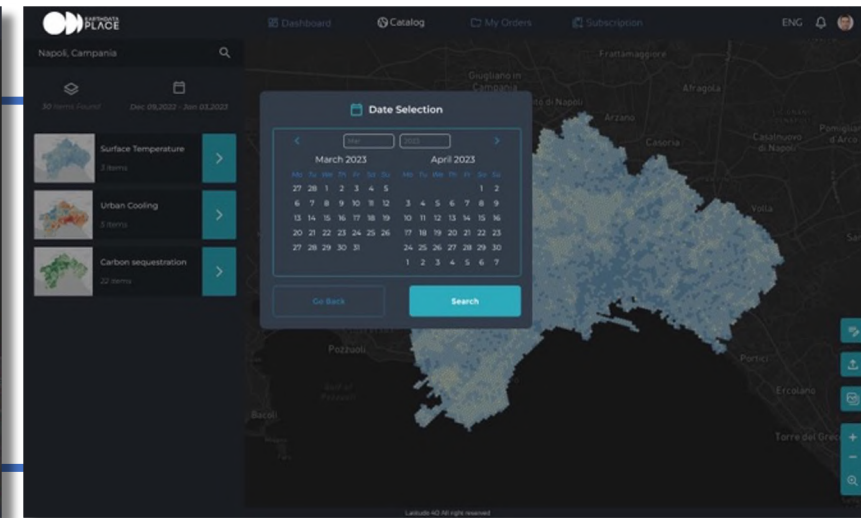
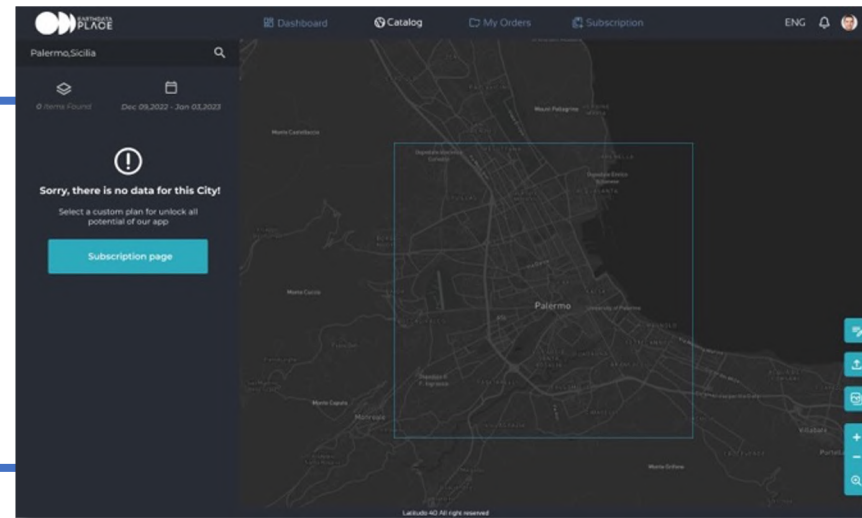
BY IDENTIFYING HIGH-RISK AREAS, INSURERS CAN DEVELOP TARGETED MITIGATION STRATEGIES, TRANSFORMING VULNERABLE ASSETS INTO RESILIENT INVESTMENTS.



SaaS platform to understand and analyze places



Dataset digital Marketplace



THE POWER OF OUR SUPER RESOLUTION



 sentinel-2



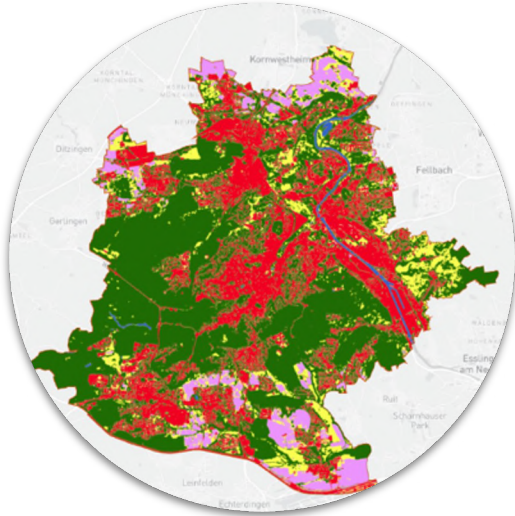
LATITUDO40[®]

AI Algorithm to bring Copernicus Sentinel 2 spatial resolution from 10 m to 1 m.

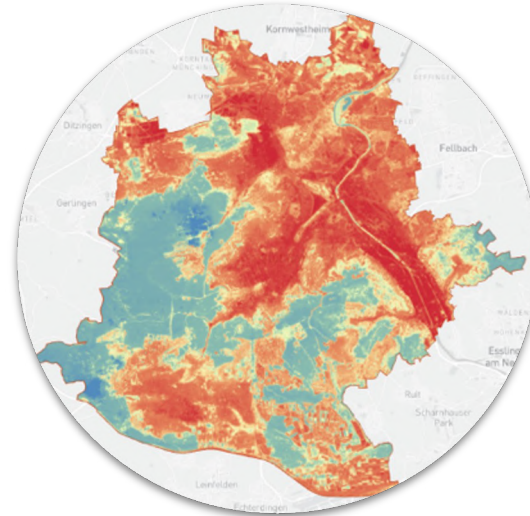
Save over 300% on the cost for high-resolution images

THE POWER OF LAYERS

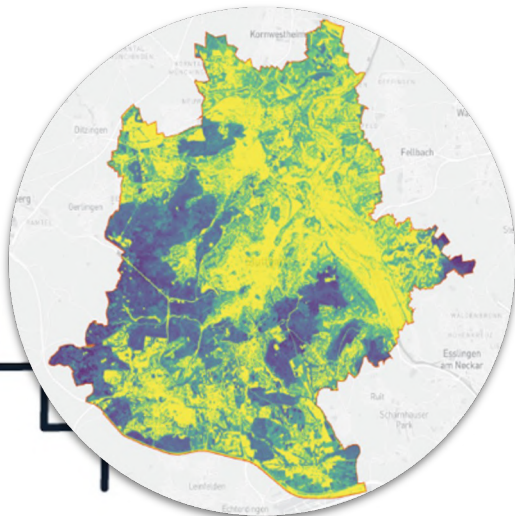
LAND USE



LAND SURFACE TEMP



TREE MAPPING



FLOOD DETECTION



A **fully automated** platform for capturing the **intricate details** of cities and places from above, with a **very high level of detail (up to 1mt)**, from the past to the present. A unique tool for **tracking changes** in time and gaining **in-depth knowledge** of places

THE POWER OF INSIGHTS

identify patterns

(urban heat islands, assets risks)

predict future risks

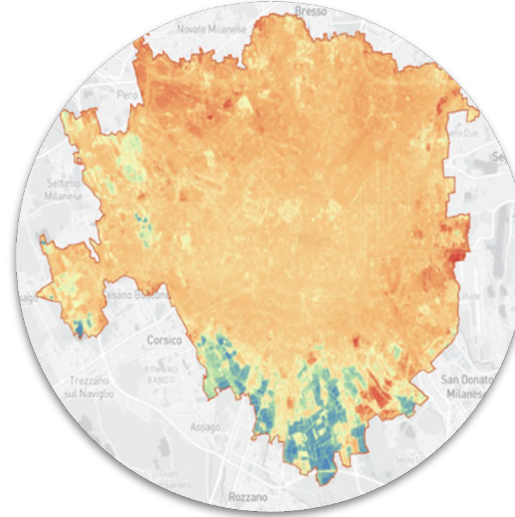
data driven decisions

(portfolio policies, risk and reinsurance management, etc.)

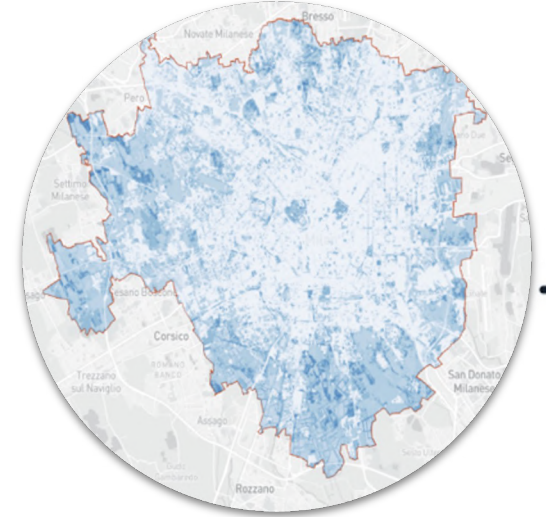
validate the outcome of mitigation actions

(environmental & financial KPIs)

URBAN HEAT ISLAND MAP



PRE/POST EVENT CHANGE DETECTION



WILDFIRE RISK INDEX

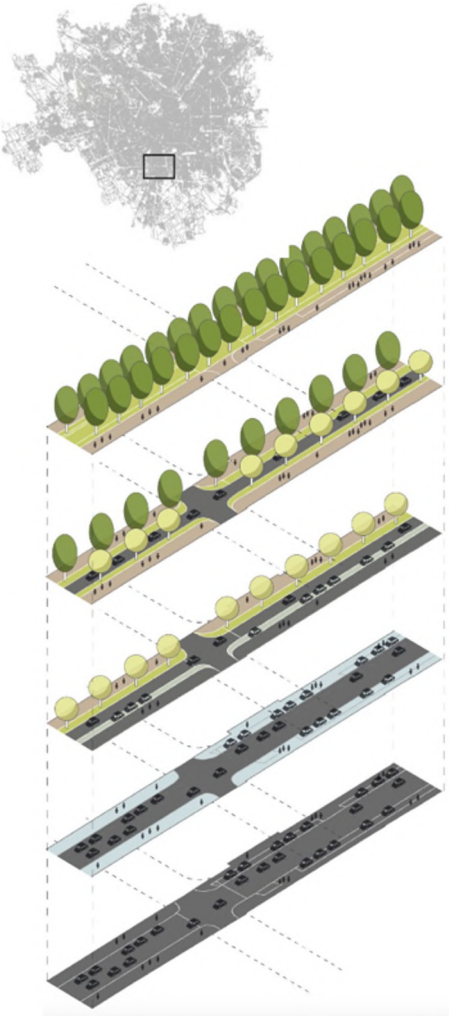


ASSETS POTENTIAL RISK INDEX



PREDICTING THE FUTURE WITH SIMULATION

Scenarios Simulation



L40 City Simulator

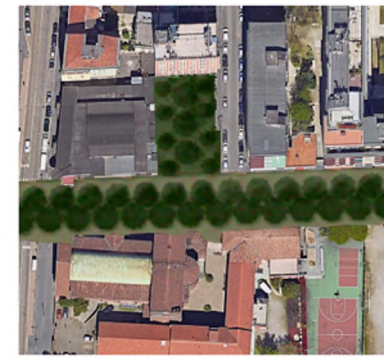
- Trees 🌳
- Buildings 🏠
- Streets 🛣️
- Water 💧
- Grass 🌿
- Bare Soil 🏜️
- Agricultural 🌾



Synthetic Images **Simulated Layers**



①
New City design



②
Synthetic Multispectral Data by Generative AI



③
Analysis on the simulated scenario



OUR VALUE PROPOSITION

Informed Decision Making & Optimal Resources Allocation

Cost Saving - to get the information

Performance Tracking - to track performance of sustainability initiatives over time

Attracting Investments - from green finance as well as from national and international bodies

Regulatory Compliance - meet national or international regulations

Community and Stakeholder Engagement Data as a common ground for collaboration

WE CREATE VALUE FOR...

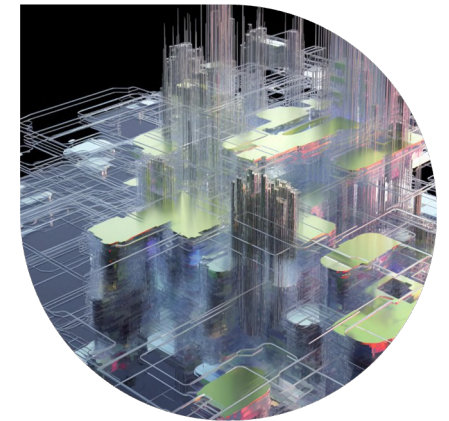


DIGITAL CITIES

Optimal Resources Allocation – Cost Saving – Sustainability
Program KPIs – Community Engagement

DIGITAL INTEGRATORS

DATASETS and INSIGHTS for digital twin / smart city
platforms / Urban Planning Tools



INSURANCE – REAL ESTATE

Understanding of CLIMATE RISK and VULNERABILITY across
their portfolio – Support in investments planning

We are working with customers and partners across the globe to improve the lives of **15 million citizens**



Climate/Environmental risks identification and mitigation actions with Nature Based Solutions



New buildings identification and city sustainability index



Urban Heat Island monitoring and Carbon Indexes 2023/27



Sustainability Projects and vegetation management



MEET OUR TEAM



Scientists, Technologist and Creatives working **together** towards the same goal: a **thriving planet!**

FOUNDERS



Gaetano Volpe
CEO



Mauro Manente
COO



Donato Amitrano
VP R&D



Giovanni Giacco
CTO

INTEGRATION



Giulio Giudice
FRONTEND
DEV



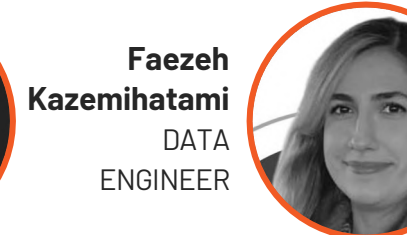
Christian De Nisi
FULLSTAKCK
DEV



Cristian Federiconi
AI ENGINEER



Davide Imperiale
DATA
ENGINEER



Faezeh Kazemihatami
DATA
ENGINEER



DATA SCIENCE



Mattia Rigioli
DATA SCIENTIST



Paolo De Piano
DATA SCIENTIST



Antonio Pascarella
DATA SCIENTIST



Giuseppe Maione
DATA SCIENTIST



Ravi Kumar
Phd Student

Francesco Amato
SALES MANAGER



Deborah Valenti
URBAN PLANNER



Andrea Montieri
BUSINESS DEV



BUSINESS



**LET'S SHAPE A SUSTAINABLE
FUTURE **TOGETHER****

THANK YOU!

Gaetano Volpe
CEO

gaetano.volpe@latitudo40.com
+39 335 5797883

www.latitudo40.com