



XL Insurance  
Reinsurance

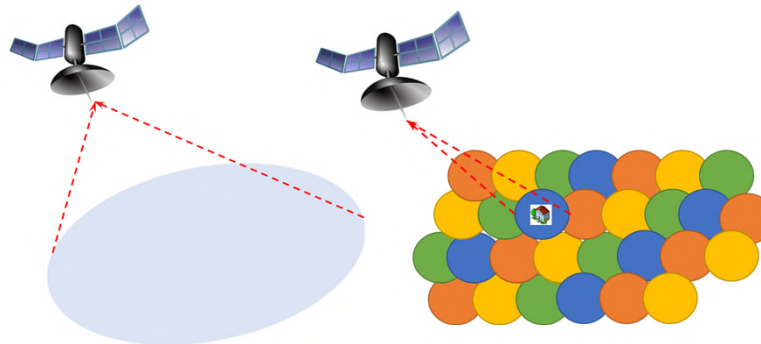
# Space Insurance – Industry trends and associated risk evolutions

AXA XL PROPRIETARY

# Underlying market evolution (1/3)

## → High-throughput satellites in GEO

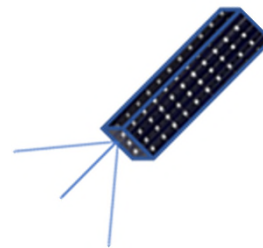
- Heavy telecommunication payload
- On-board processing
- Multi-beam



- Several satellites launched (Konnect VHTS, SES-17, Viasat-3)
- Large accumulation due to high values

## → Small satellites in LEO

- 1-200 kg
- Large variety of mission, design, manufacturing philosophy

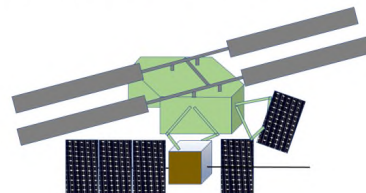


- Several failures post-separation and in-orbit
- No reliability improvement

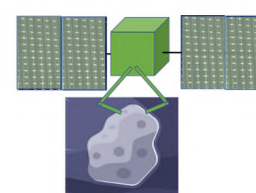
## → In-orbit servicing (ISAM)

- Specific mission

MANUFACTURING / REPAIR / REFUELLING



MINING / DEBRIS REMOVAL



- Still in trial phase
- Need for sustainability solutions



# Underlying market evolution (3/3) – new trends

## → Deep space missions (e.g., Moon, Mars)

- Communications, observation, navigation, power-beaming, rovers
- System architecture around the Moon
- Support for future uncrewed and crewed missions



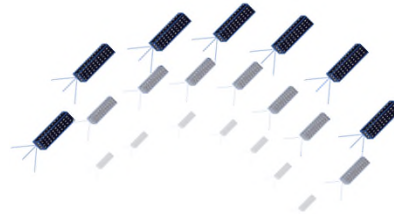
ESA - A constellation of satellites around the Moon

- Space environment
- Unusual mission profile
- Less visibility and more autonomy

---

## → Constellations

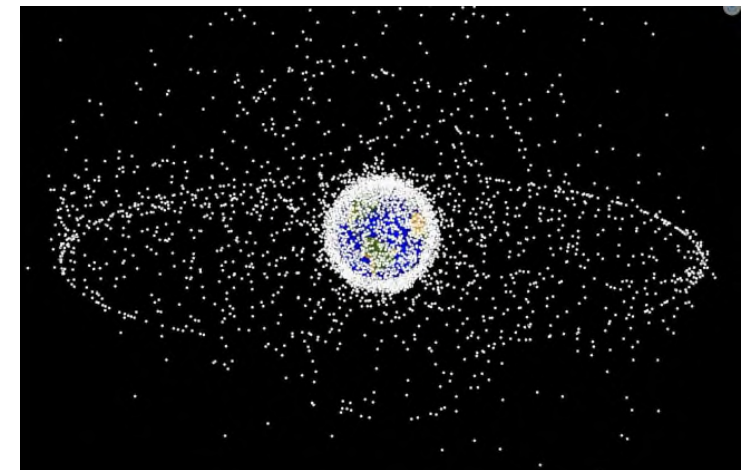
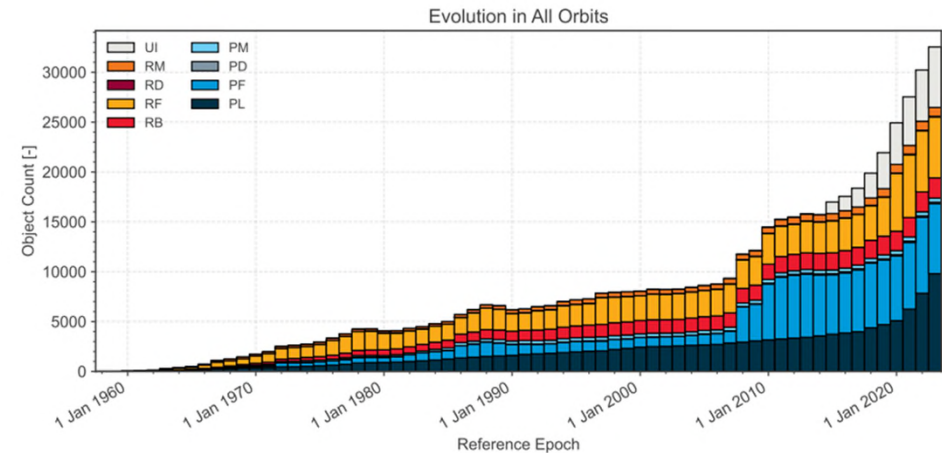
- Financing challenge for large projects
- Some new projects close to flight testing with demo satellites



- Insurance is very different from Launch (large accumulation) and post-separation (with deductible)

# Collision Risk

- Number of objects in orbit is increasing
  - Long term sustainability risk
  - Main concern is in LEO
- Number of suspected collisions and close approaches has increased
  - Some recent claims on insured satellites
- Insurers role
  - Check operator behavior/awareness
  - Sensitivity of design vs space environment
  - Integrate collision probability into pricing
  - Encourage responsible behavior



[aerospace.org/node/50009/printable/print](https://aerospace.org/node/50009/printable/print)



Thank you!